

County Commissioners of Kent County, MD

Department of Parks and Recreation

11041 Worton Road • P.O. Box 67 • Worton, MD 21678 • Phone 410-778-1948 • Fax 410-778-4602

August 20, 2015

Carrie Lhotsky, Regional Administration
Program Open Space Grants
Department of Natural Resources
Tawes State Office Bldg.
580 Taylor Ave., E-4
Annapolis, MD 21401

Dear Ms. Lhotsky,

I am pleased to submit Kent County's Fiscal Year 2016 Program Open Space Program for development projects.

The projects proposed in the Plan have been prioritized to meet the needs of Kent County, as well as the State requirements for use of Program Open Space dollars. In addition, the Plan is consistent with the goals of the 2012 Kent County Land Preservation, Park, and Recreation Plan.

Thank you for your continued support of and assistance in carrying out Kent County's recreation goals. I look forward to its approval. Should you have questions or concerns related to the Annual Program, I can be reached at 410-778-1986 or mbutler@kentgov.org.

Sincerely,



Myra S. Butler
Director



Creating balanced opportunities for our patrons to play, learn, and grow through our programs and parks.



FISCAL YEAR 2016 PROGRAM OPEN SPACE KENT COUNTY ANNUAL PROGRAM

INTRODUCTION:

Development and implementation of the Annual Program is completed by the Director of the Parks and Recreation Department, resulting from a collaborative effort between the administrative staff of the Parks and Recreation Department, Kent County Department of Public Works, the Parks and Recreation Advisory Board, Kent County Board of Education, Kent County Planning Office and Planning Commission, local town municipalities, State of Maryland Department of Natural Resources, Program Open Space state and regional offices, with final approval by the County Commissioners of Kent County.

The Annual Program is consistent with the guidelines set forth in the County's Land Preservation, Parks, and Recreation Plan and the County Comprehensive Plan. All project requests and recommendations (both county and municipal) are submitted to the Parks and Recreation Advisory Board. It is the responsibility of the Board to prioritize and submit recommendations to the Kent County Commissioners who make the final approval for implementation of projects into the County's fiscal budget. The projects in the 2016 Annual Program, outlined below, have received approval in this fiscal year's budget.

Worton Park Enhancement II

The focus of this project is multi-faceted.

Playground Equipment and Surface Improvements

The existing swings need replacement and the swing set frame needs rehabilitation. The borders around the swing set and playground equipment do not meet current safety standards and need replacement with plastic borders. The playing surface in both areas needs replacement to ensure child safety. A safer playground area will yield more children playing in a safe environment, drawing an increased volume of use by the public.

Grading Plan/Sediment Control Plan

There are three grading project areas within Worton Park that require grades and an approved sediment control plan. These include extending three multi-purpose athletic fields, re-grading one multi-purpose athletic field, and rehabilitating a softball diamond. This plan requires the services of an engineering/surveying consultant.

Multi-purpose Athletic Field Extension

The three multi-purpose athletic fields completed in fiscal year 2014 were designed to be only 300 feet long, per the original conceptual layout of the Kent County Community Center project. During construction of the fields all available surplus fill material was used to maximize the fields' sizes. In order to extend the

fields to 360 feet, to maximize use for multiple age and division sports, additional material must be imported.

Multi-Purpose Athletic Field Re-grading

The athletic field primarily used for youth football and cheer is located on an existing grass area in the park with no grading work. One corner of the field has a low area and the elevation drops approximately 3-4 feet. Importing fill material and re-grading the field would drastically improve playing conditions, eliminating the safety issues faced by players. The improved athletic fields will aid in Kent County's ability to increase the volume of use for local users as well as attracting non-local users for tournaments and other events.

Softball Diamond Rehabilitation

"E" diamond is a ball field that is located in an existing grass field with no grading and no infield mix. The infield does not drain adequately and installing infield mix without re-grading the outfield for proper drainage would be costly without any significant improvement for play. For player safety, the outfield needs re-grading to improve drainage and eliminate numerous uneven areas. The field is currently only used when desperately needed due to its condition. It is not unusual for all other fields to be scheduled at the same time and if rehabilitated this field would also be used routinely, therefore, increasing the volume of use.

Betterton Beach Restroom Renovation Design

The focus of this project is for a restroom/bathhouse structure at Betterton Beach that was constructed in the late eighties and is now approaching 30 years in age. The building's exterior is wood and is visibly showing areas of rot. The interior of the structure is concrete block with no access to plumbing piping in the walls. Fixtures are outdated and partitions are deteriorated from moisture conditions. The building needs major renovation/replacement and requires the services of an architectural consultant. Betterton Beach is a popular tourist attraction and the Kent County's only public beach access for swimming. The enhancements to the aesthetic appeal of this project will immediately contribute to an increased volume of use of the facility by the public.

Edesville Park Playground

The playground surface is in need of replacement to ensure child safety. A safer playground area will yield more children playing in a safe environment, drawing an increased volume of use by the public.

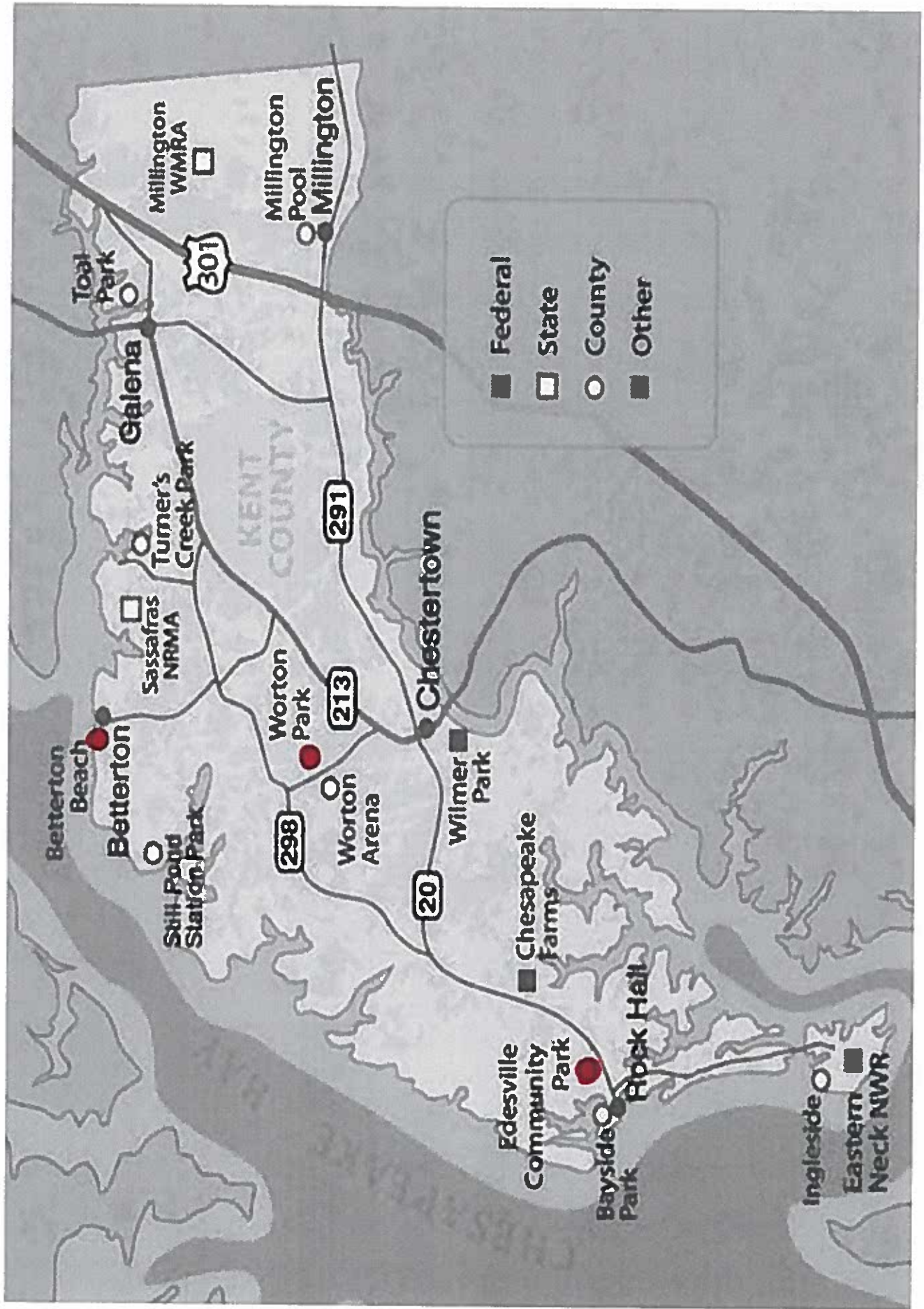
The projects outlined above will collectively contribute to an increased volume of use of County parks and facilities by the public, both current and new users.

The County has reached its open space acreage goal and continuously explores opportunities of new open space to assure maintaining its goal.

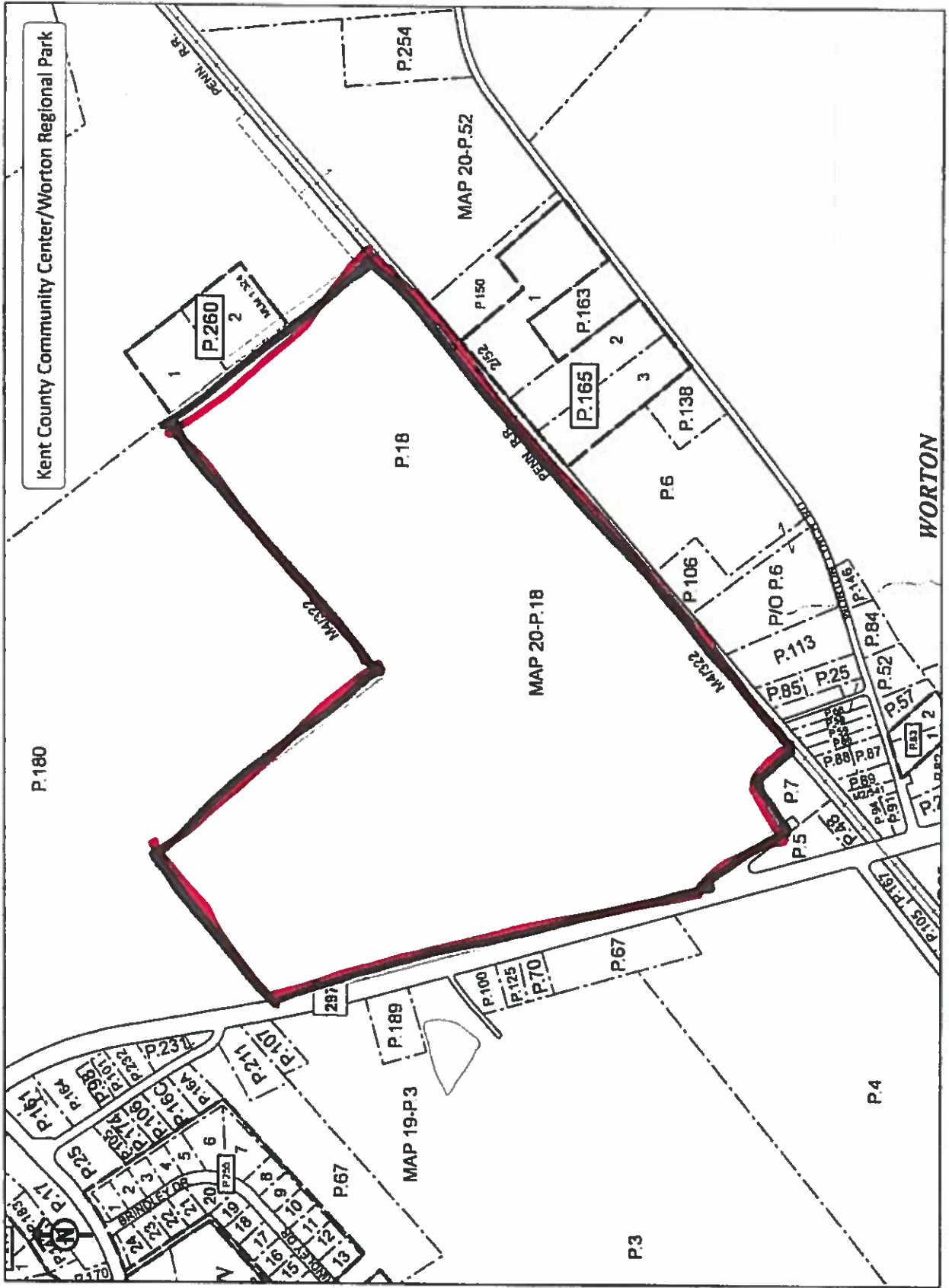
**PROGRAM OPEN SPACE
ANNUAL PROGRAM FOR DEVELOPMENT
FISCAL YEAR 2016 – KENT COUNTY, MD**

	<u>Project Name / Project Description</u>	<u>Acreage</u>			<u>Source of Funds for Annual Program Only</u>			
		<u>Existing</u>	<u>Ultimate</u>	<u>Protect</u>	<u>Total</u>	<u>Local</u>	<u>State (POS Local Funds)</u>	<u>Federal</u>
KENT COUNTY PARKS & REC	<i>Worton Park Enhancement II</i> Rehabilitate playground swings, frame, and border and install safety surfacing in playground and swing set areas; Grading plan design for softball diamond and multi-purpose fields; Grading of (1) multi-purpose athletic field; Multi-purpose athletic field extension; Softball diamond rehabilitation	97	97	N/A	\$262,000	\$26,200	\$235,800	N/A
KENT COUNTY PARKS & REC	<i>Betterton Beach Restroom Renovation Design</i> Architectural design consulting services to renovate 30 year old bathroom/bathroom structure that has deteriorated	4.7	4.7	N/A	\$25,000	\$2,500	\$22,500	N/A
KENT COUNTY PARKS & REC	<i>Edesville Park Playground Surfacing</i> Install safety surfacing within the bordered playground area	4.8	4.8	N/A	\$3,700	\$370	\$3,330	N/A

KENT COUNTY, MARYLAND
PROGRAM OPEN SPACE ANNUAL PROGRAM



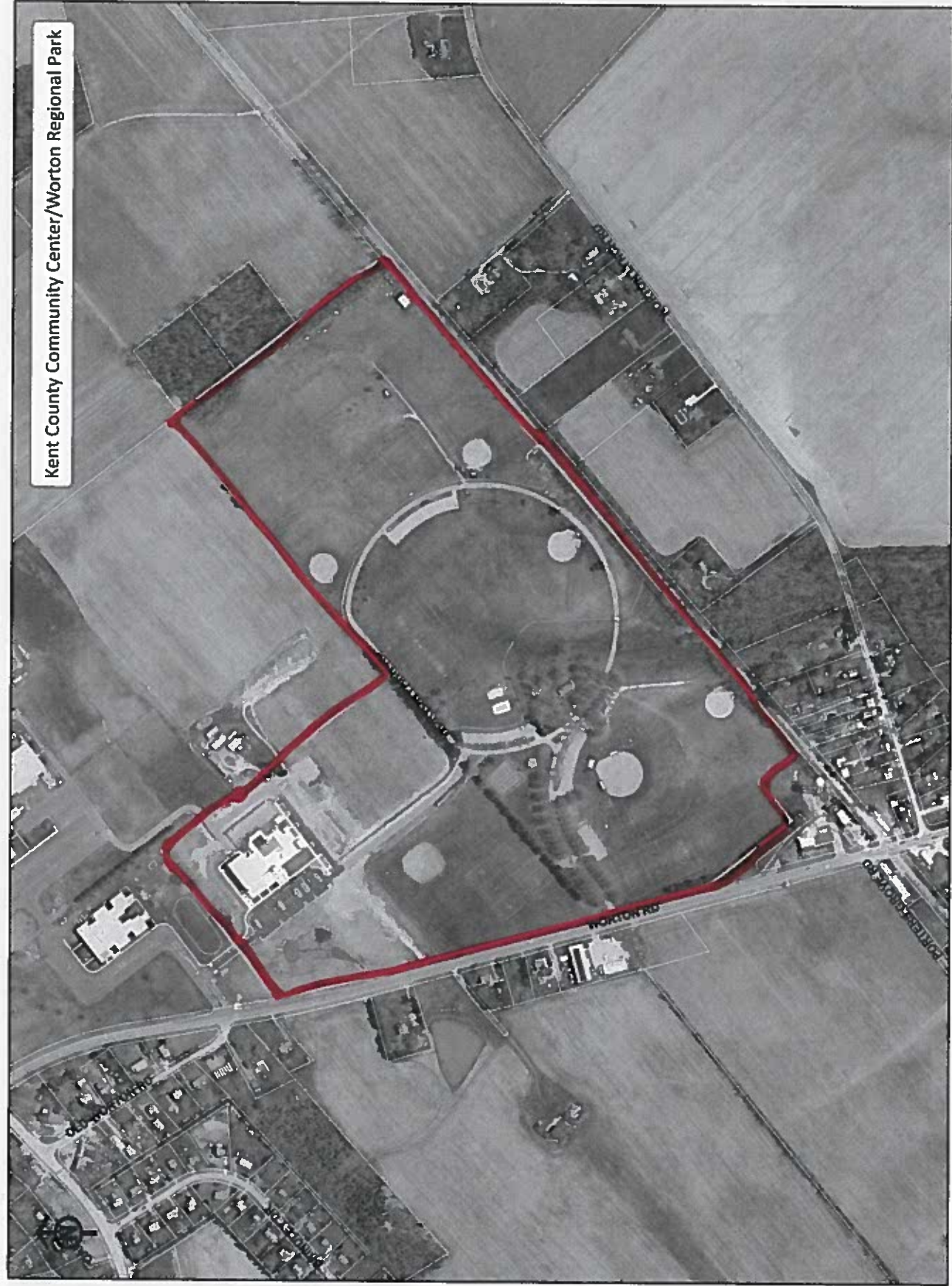
KENT COUNTY, MARYLAND
 PROGRAM OPEN SPACE ANNUAL PROGRAM
 WORTON REGIONAL PARK/COMMUNITY CENTER CAMPUS



Source: Kent County Dept. of Planning, Housing and Zoning. MidProperty View 2011. Map prepared July 2013.

1 inch = 500 feet

KENT COUNTY, MARYLAND
PROGRAM OPEN SPACE ANNUAL PROGRAM
WORTON REGIONAL PARK/COMMUNITY CENTER CAMPUS – SITE PLAN



Source: Kent County Dept. of Planning, Housing and Zoning. MdProperty View 2011. Map prepared July 2013.

1 inch = 500 feet

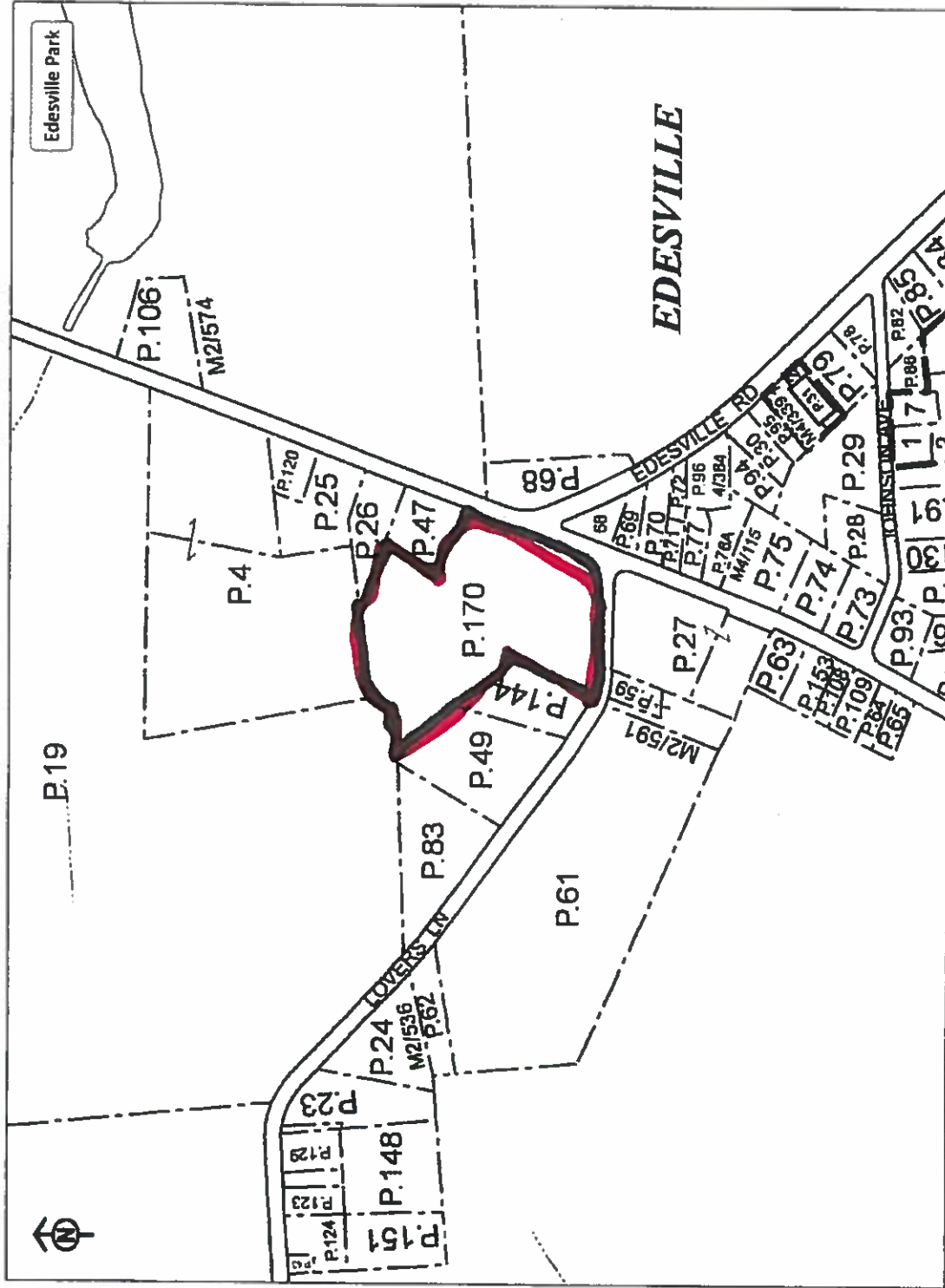
KENT COUNTY, MARYLAND
PROGRAM OPEN SPACE ANNUAL PROGRAM
BETTERTON BEACH



Source: Kent County Dept. of Planning, Housing and Zoning, MdProperty View 2011. Map prepared August 2013.

1 inch = 300 feet

KENT COUNTY, MARYLAND
 PROGRAM OPEN SPACE ANNUAL PROGRAM
 EDESVILLE PARK



Source: Kent County Dept. of Planning, Housing and Zoning. MdProperty View 2011. Map prepared August 2013. 1 inch = 300 feet

KENT COUNTY, MARYLAND
PROGRAM OPEN SPACE ANNUAL PROGRAM
EDESVILLE PARK



Source: Kent County Dept. of Planning, Housing and Zoning. MdProperty View 2011. Map prepared August 2013.

1 inch = 300 feet