

2009 Activity Guide

ADMINISTRATION

Director
Jeffrey J. Troester
410-778-1948
jtroester@kentgov.org

Recreation Supervisor
Myra S. Butler
410-778-1986
mbutler@kentgov.org

Program Coordinator
Abby C. Joiner
410-778-2083
ajoiner@kentgov.org

Program Coordinator
William B. Hughes, III
410-778-1957
whughes@kentgov.org

Office Manager
Laura E. Karns
410-778-1949
lkarns@kentgov.org

Office Assistant
Stacy A. Denny
410-810-5955
sdenny@kentgov.org

Maintenance Supervisor
Mark L. Dixon
410-778-3904
mdixon@kentgov.org

Crew Leader
James N. Sleva, Jr.

Maintenance Worker
Jason R. Depp

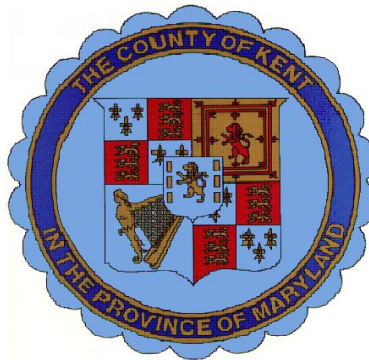
Maintenance Worker
Phil E. Trink

KENT COUNTY COMMISSIONERS

President
Roy W. Crow

Member
William W. Pickrum

Member
Ronald H. Fithian



MAILING ADDRESS

P.O. Box 67
Worton, MD 21678

LOCATION

10932 Worton Road
Worton, MD 21678

MAIN LINE: 410-778-1948

FAX: 410-778-4602

EMAIL: info@KentParksAndRec.org

HOME PAGE

www.KentParksAndRec.org

ADVISORY BOARD

Chair
Penny Usilton

Vice Chair
Vernon "Jake" Downey

Board of Education Member
Bryan Williams

County Commissioner
William W. Pickrum

Member
Edward L. Athey

Member
Melissa T. Cannon

Member
Joyce B. Moody

Member
Joseph E. Mulford

Member
Ron Jordan

Student Member
Parker Hudson

Student Member
Anna Hall

GENERAL INFORMATION

KENT COUNTY PARKS AND RECREATION PHILOSOPHY

The mission of the Kent County Department of Parks and Recreation is to provide leadership in coordinating and conducting parks and recreation programs and activities for the maximum benefit of all citizens in Kent County, to maintain and develop to the utmost the existing parks within the Kent County system, and to identify and expand for the future new park land in the county.

VOLUNTEERS

Kent County Parks and Recreation is continually searching for volunteers to coach, officiate and assist in the administration of all community sports leagues, programs and activities. Interested individuals are encouraged to contact the Parks and Recreation office at 410-778-1957 (Will Hughes) for volunteer opportunities in sports, 410-778-1986 (Myra Butler), for volunteer opportunities in youth programs and special events, or email info@kentparksandrec.org.

REGISTRATION POLICY

Programs and events offered by Parks and Recreation often have a limited number of spaces for participants. Kent County Parks and Recreation reserves the right to cancel any program that does not meet minimum registration requirements. Please inquire about early registration for all programs and events by contacting the Parks and Recreation office at 410-778-1948.

SCHOLARSHIPS

No youth will be denied participation in any Kent County Parks and Recreation sponsored program due to financial restraints. Scholarships are available based on financial need. Contact the administrative office at 410-778-1948 for further information.

CHARACTER COUNTS AT KENT COUNTY PARKS & RECREATION!

The six pillars of character are instrumental in the success of all programs offered by Kent County Parks and Recreation. All program participants are encouraged to promote the six pillars of character: trustworthiness, respect, responsibility, fairness, caring, and citizenship. Failure of any participant to follow the examples set forth in each pillar may result in expulsion from Kent County Parks and Recreation programs.

PUBLIC SCHOOL SITES

Currently, many of our recreation programs are offered in surrounding public school facilities. Working closely with the Board of Education, the Department of Parks and Recreation has several generous facility contracts with Kent County High School, Chestertown, Galena and Rock Hall Middle Schools and Garnett, Worton, Rock Hall, and Millington Elementary Schools. These facilities are utilized by the Department of Parks and Recreation primarily on weekday evenings.

LOCAL MANAGEMENT BOARD FOR CHILDREN'S & FAMILY SERVICES OF KENT COUNTY (LMB)

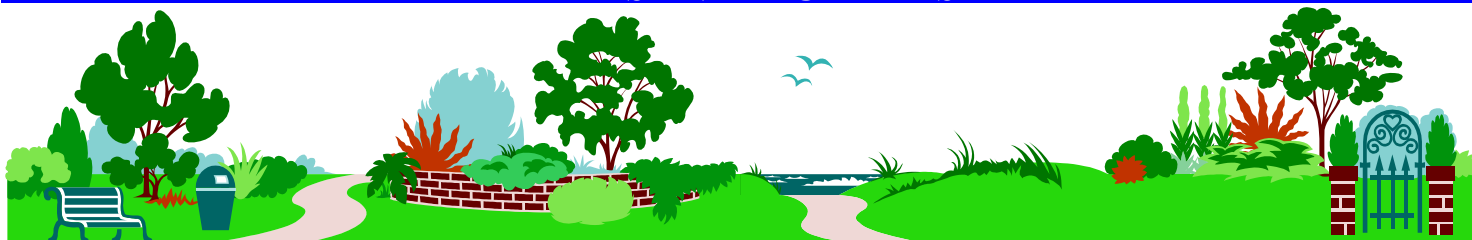
Several programs offered by Parks and Recreation are supported by the Local Management Board for Children's and Family Services of Kent County. The mission of the LMB is to encourage children in completing school and communities to support families in becoming stable and economically independent.

KENT COUNTY BOARD OF EDUCATION 21ST CENTURY COMMUNITY LEARNING CENTERS PARTNERSHIP

Together with Kent County Public Schools, the Department of Parks and Recreation is proud to be a partner in after school programming for children and youth of Kent County. Because of a federal award, **Century 21**, we are able to offer more comprehensive, exciting, fun, recreational and educational opportunities. We would like to acknowledge and thank Kent County Public Schools for continuing to be a collaborative agency with the Department of Parks and Recreation in providing some of the very best quality programming for children and youth in the State of Maryland to meet the needs of the community. The changes and collaborative efforts of both agencies are designed to maximize day, evening and off season hours at individual school sites.

MD DEPARTMENT OF NATURAL RESOURCES PROGRAM OPEN SPACE

Program Open Space (POS) is a nationally recognized program with two components, a local grant component often called Localside POS and a component that funds acquisitions by the State. The first component provides financial and technical assistance to local subdivisions for the planning, acquisition, and/or development of recreation land or open space areas, including dedicated funds for Maryland's state and local parks and conservation areas. Established under the Department of Natural Resources in 1969, POS symbolizes Maryland's long term commitment to conserving our natural resources while providing exceptional outdoor recreation opportunities for our citizens. Today there are more than 5,000 individual county and municipal parks and conservation areas that exist because of the program. Almost all of the land purchased by the DNR in Maryland in the last 40 years was funded at least in part through POS.



BAYSIDE LANDING POOL AND PARK

The newest of the County's parks and public landings, Bayside Landing Park is located off of Bayside Avenue in Rock Hall and is centered along the Rock Hall Harbor. The park offers a public swimming pool (open Tuesday through Sunday, 12 p.m. - 7 p.m. from Memorial Day to Labor Day), public restroom facilities, deep water and dual boat ramps which provide direct access to the Chesapeake Bay. There are 39 boat slips available for rental through the County Public Landings office (410-778-7439). A newly constructed walkway joins the park and the public bulkhead which hosts various special events throughout the year. Contact Stacy Denny at 410-778-1948 for further pool rental information.

BETTERTON BEACH

This 5.2 acre waterfront park offers a sandy beach with a volleyball court, bathhouse, picnic pavilion, stone fishing jetty, and transient boat launching ramp. Enjoy this exceptional beach at the head of the Chesapeake Bay. Lifeguards are on duty weekends from Memorial Day weekend to Labor Day weekend. Concessions are available for purchase most days. Contact Stacy Denny at 410-778-1948 for pavilion rental information.

EDESVILLE COMMUNITY PARK

This five acre outdoor recreation facility has a recreation building/pavilion for parties and special events, as well as a ball field, volleyball court, playground, walking trail, and a picnic grove for quiet country afternoons. Contact Stacy Denny at 410-778-1948 for further rental information.

MILLINGTON POOL AND PARK

Kent County Parks and Recreation is proud of its newly renovated public swimming pool (open Tuesday through Sunday, 12 p.m. - 7 p.m., from Memorial Day to Labor Day), bathhouse, tennis courts and picnic area. Swimming lessons are available as are Monday and evening group rentals. Contact Will Hughes at 410-778-1957 for rental and swimming lesson information.

WORTON ARENA

Originally built as a roller rink, and still features skating on Sundays during the winter, this indoor recreation facility is available for group rentals. Reservations are required a minimum of two weeks in advance. Contact Stacy Denny at 410-778-1948 for further rental information.

TOAL PARK

This 37.5 acre waterfront park is named for its benefactor the family of William R Toal Sr. who donated the original 17.5 acres. Through the efforts of the Eastern Shore Land Conservancy and funding from Maryland Department of Natural Resources, Program Open Space an additional 20 acres was acquired in 2008. Toal Park is located on Millcreek just off the Sassafras River, Route 213 just outside of Galena. The park includes two ball fields, sand volleyball court, playground, walking trail and a picnic pavilion. Contact Stacy Denny at 410-778-1948 for further rental information.

WORTON PARK

Enjoy 69 acres of a multi-use facility including six ball fields (one lighted), two equestrian rings, two tennis courts, two lighted sand volleyball courts, playground, concession stand, rest rooms, picnic pavilion, batting cage and two basketball courts. Worton Park now features a walking trail, six tenths of a mile long. Use this new trail to keep a safe distance from traffic while still keeping an eye on playground and field activities. Concessions are available for purchase during special events and league game nights. Contact Stacy Denny at 410-778-1948 for further pavilion rental information or Will Hughes at 410-778-1957 for field rental information.

TURNER'S CREEK PARK

Located adjacent to the Sassafras Natural Resource Management Area, Turner's Creek is part of the National Park Service, Chesapeake Bay Gateways Network. Explore 147 acres of trails, wooded acres, open fields, and a waterfront bluff overlooking Turner's Creek off the Sassafras River. A public boat ramp is surrounded by over 100 feet of bulkhead area. Restroom facilities are located in the basement of the historic Lathim House (built in the late 18th century). The picnic pavilion includes barbecue grills and tables. Other attractions include miles of nature trails, an abundance of waterfowl and wildlife, and a famous historic tree grove. The soil conservation agricultural demonstration area along with Kent Museum, Inc., displaying antique and historical agricultural equipment, are open the 1st and 3rd Saturday of each month from 10 a.m. until 4 p.m., May through October. Turner's Creek picnic area and pavilion are available for group rentals. Contact Stacy Denny at 410-778-1948 for further rental information.

PARK AND FACILITY RENTALS

FACILITY RENTAL POLICY

Reservations are made by contacting the Parks and Recreation office at least two weeks prior to the requested reservation date. Pending availability of the specific date and time, a rental contract will then be forwarded for signature and must be returned to the administrative office with full payment. Once payment has been received, an approved copy of the rental contract will be forwarded to the requestor. Please note that the full payment is due by the date indicated in the letter accompanying the rental contract. **If the full payment is not received by the date indicated, the reservation will be cancelled.**

The requestor must notify the Parks and Recreation office of any changes in reservation times. The requestor will be permitted one hour beyond scheduled time to show or will forfeit the reservation fee paid. Refunds will only be granted if reservation is cancelled during weekday business hours (Monday – Friday, 8:30 a.m. – 4:30 p.m.) prior to scheduled reservation (i.e. contacting office by 4:00 p.m. on the Friday prior to a Saturday or Sunday reservation). A \$5 service fee will be charged for all cancellations.

FACILITY RENTAL FEES

Any group or individual requesting private use of a facility will be charged a rental fee based on facility and administrative costs as listed below. **There are NO non-profit fee waivers.** Call 410-778-1948 for rental information and availability.

Arena:	\$30/hour (in-county) \$60/hour (out-of-county) (NO SUMMER RENTALS JUNE - AUGUST)
Worton Pavilion:	\$25/hour (3 hour minimum) or \$250/day (NO WEEKDAY SUMMER RENTALS BEFORE 6 PM, JUNE - AUGUST)
Other Pavilions:	\$25/hour (3 hour minimum) or \$250/day
Athletic Fields:	\$75/game (in-county) \$100/game (out-of-county)
Ball Diamond:	\$50/game (in-county) \$75/game (out-of-county)
Orem Field: (A Diamond)	\$75/event (in-county) \$100/event (out-of-county)
Softball Tournament:	\$30 per team
Equestrian Area:	\$100/day (in-county) \$150/day (out-of-county)
Pools:	\$50/hour (in-county) \$75/hour (out-of-county)



PARK AND FACILITY RENTAL REGULATIONS

- Reservation requestor must be at least 21 years of age. The contract holder must have the contract on-site during the permitted activity. The contract must be shown to park personnel upon request.
- The contract holder is responsible for all guests who attend the event and for maintaining orderly conduct among all persons attending the permitted activity. Inappropriate or indecent conduct, harassment and/or language is strictly prohibited.
- Alcoholic Beverages are strictly prohibited in the Worton Arena and grounds. Alcoholic beverages may be consumed by those 21 years old or older in the pavilions. Alcohol can not be sold, only served, and glass containers are prohibited. Alcoholic beverages are not permitted on site during youth activities.
- All areas and facilities are off limits after dark with the exception of scheduled events in lighted areas.
- Trash Removal: The department will hold the contract holder responsible for the removal of all paper, cans, food, etc. used or deposited during the event. Refuse must be in trash bags and placed inside or next to waste receptacles.
- Parking shall be in designated areas only. Parking or driving on turf or unauthorized areas is prohibited.
- The contract holder is not permitted to collect admission fees, or to sell any merchandise, articles or things, including food and beverages, without a permit specifically authorizing such activity.
- Cancellations must be made to the administrative office. Cancellations must be made by the contract holder no later than the close of business the day before the rental or by 4 p.m. the Friday before a Saturday/Sunday rental otherwise no refund will be granted. A \$5 service fee will be charged for all cancellations and will be deducted from the refund.
- Kent County Parks and Recreation reserves the right to cancel any contract.



SWIMMING LESSONS

Ages: 4 - 13
 Dates: Session I: July 6th - July 16th
 Session II: July 20th - July 30th
 Session III: August 3rd - August 13th
 Days: Monday – Thursday
 9:30 a.m. - 10:15 a.m. (Ages 4-5)
 10:30 a.m. - 11:15 a.m. (Ages 6-13)
 Cost: \$35 per swimmer per session
Registration begins April 1st

We are pleased to offer American Red Cross (ARC) swim lessons led by an ARC certified Water Safety Instructor. A skills test will be scheduled when registration is received. Classes are subject to cancellation if the minimum number of participants is not met. Contact Will Hughes at 410-778-1957 or whughes@kentgov.org for further information.



POOL AND BEACH REGULATIONS



BETTERTON BEACH

- Lifeguards and park personnel have full authority in the park.
- No pets permitted on public bathing beach year round.
- No alcoholic beverages permitted on the beach.
- No glass containers permitted on the beach.
- Swim in designated swim areas only. No jumping or swimming from the jetty or pier.
- No fires permitted in the park.
- Cooking grills permitted in the pavilion area only.
- Keep the beach clean - deposit trash in proper containers.
- Park in designated parking areas only.
- Beach and pavilion closed from dusk to dawn.
- Parking lot and public landing closed 10 p.m. until 5 a.m.
- Skateboards, roller skates/blades, and bicycles prohibited on boardwalk and in picnic pavilion.
- Lifeguards on duty Saturdays and Sundays, 10 a.m. until 6 p.m., Memorial Day through Labor Day.
- If lifeguards are not on duty, SWIM AT YOUR OWN RISK.

MILLINGTON POOL & BAYSIDE LANDING POOL

Hours of operation from Memorial Day through Labor Day are Tuesday through Sunday, 12 p.m. until 7 p.m. The pools are closed on Mondays with the exception of Memorial Day and Labor Day. Contact Will Hughes at 410-778-1957 or whughes@kentgov.org for further information.

Daily Admission:	\$2 (in-county) \$3 (out-of-county)
Season Pass:	\$50 (in-county) \$60 (out-of-county)
Family Pass: (Family of 4)	\$150 (in-county) \$175 (out-of-county)

- No child under age eight is permitted in pool area without an adult 18 years of age or older.
- No radios, tape/CD players, or other electronic/portable devices are permitted in the pool area.
- All children may be subject to a swim test by a certified lifeguard.

ADULT SPORTS



CO-ED RECREATIONAL SOFTBALL

Ages: 18 and up
Dates: June - September
Days: Monday and Thursday
Time: 6:30 p.m. – 9:30 p.m.
Place: Worton Park
Cost: \$250 per team (Due April 16th)

Men and women, gather your friends for this non-competitive league for softball fans wanting to get a little exercise throughout the summer. **Team roster due May 21st**. Games will be played once per week. Pre-season meetings February 19th, March 19th, April 16th and May 21st at Worton Arena 6 p.m. Contact Will Hughes at 410-778-1957 or whughes@kentgov.org for further information.

CO-ED DROP-IN SAND VOLLEYBALL

Ages: 18 and up
Dates: April - September
Days: Wednesday and Sunday
Time: 6 p.m. Wednesday, 10 a.m. Sunday
Place: Worton Park
Cost: Free

This group has a lot of fun playing in the sand. If you are looking to step up to some tough sand volleyball competition, come join in. This is a drop-in program so individuals are welcome to play. Contact Will Hughes at 410-778-1957 or whughes@kentgov.org for further information.



CO-ED RECREATIONAL VOLLEYBALL

If you are interested in bringing this recreational league indoors during the winter months (November - March), please contact Will Hughes at 410-778-1957 or whughes@kentgov.org for further information.

CO-ED RECREATIONAL KICKBALL

Ages: 18 and up
Dates: September – November
Days: Monday and Thursday
Time: 6 p.m. (Under the lights)
Place: Worton Park
Cost: \$150 per team

Come relive those childhood glory days! If you are looking to keep active, this new league promises to be tons of fun. This league will be played according to World Adult Kickball Association rules. Contact Will Hughes at 410-778-1957 or whughes@kentgov.org for further information.



CO-ED DROP-IN PING PONG

Ages: 16 and up
Dates: Year Round (Closed on holidays)
Days: Monday and Friday
Time: 10:30 a.m. - 12:30 p.m., Monday
10 a.m. - 12:30 p.m., Friday
Place: Worton Arena
Cost: Free

Looking for something to do on Monday and Friday mornings? Come join us for year round recreational fun. Located at Worton Arena, this drop in program offers full size playing tables. Program is closed on rainy days when summer camp is in session (June - August). Contact Will Hughes at 410-778-1957 or whughes@kentgov.org for further information.



MEN'S DROP-IN BASKETBALL

Ages: 18 and up
Dates: November - March
Days: Monday and Wednesday
Time: 7:30 p.m. – 9:30 p.m.
Place: Chestertown and Galena Middle Schools

Cost: \$20 per player or \$3 per night

Men, here it is! Come shoot hoops and play pick-up games as you please two nights per week in this drop-in program. Located at Chestertown and Galena Middle Schools, this drop-in program offers full size playing courts with plenty of room for the hardcore hoops player. Contact Will Hughes at 410-778-1957 or whughes@kentgov.org for further information.

ADULT & TEEN FITNESS

ZUMBA FITNESS

ZUMBA combines high energy and motivating music with unique moves and combinations that allow participants to dance away their worries. It is based on the principle that a workout should be "FUN AND EASY TO DO" in order for participants to stick to the ZUMBA fitness program to achieve long-term health benefits. ZUMBA is not only great for the body, but is also great for the mind. It is a "feel-happy" workout. ZUMBA is a fusion of Latin and International music - dance themes creating a dynamic, exciting, effective fitness system! The routines feature aerobic/fitness interval training with a combination of fast and slow rhythms that tone and sculpt the body. ZUMBA utilizes the principals of fitness interval training and resistance training to maximize caloric output, fat burning and total body toning. It is a mixture of body sculpting movements with easy to follow dance steps. Contact Myra Butler at 410-778-1986 or mbutler@kentgov.org for further information on PM Zumba or summer Zumba.

PM ZUMBA

Ages: Adult
Days: Monday and Wednesday
Time: 5:15 p.m. - 6:15 p.m.
Dates: September - May (Classes are ongoing)
Place: Worton Arena
Cost: \$60 per eight week session or \$6 per class

Ask about County & State Employee and Student discounts!

SUMMER ZUMBA (TENTATIVE)

Ages: Adult
Days: Monday and Wednesday
Time: 5:15 p.m. - 6:15 p.m.
Dates: June - August (10 week session)
Place: Washington College
(Lifetime Fitness Center)
Cost: \$80 per session or \$6 per class

Ask about County & State Employee and Student discounts!



AM ZUMBA WITH CHERAE ENSOR

Ages: Adult
Days: Monday and Wednesday
Time: 9:30 a.m.- 10:30 a.m.
Dates: September - May
Place: Worton Arena
Cost: \$6 per class or \$30 for six classes

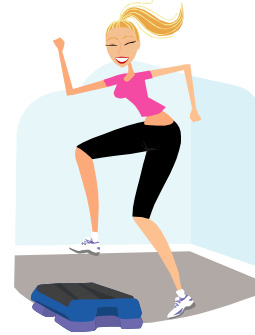
Morning Zumba fitness classes are offered privately by Cherae Ensor at Worton Arena throughout the school year. Please visit Cherae's website at www.cherae4zumba.com for information on prices and other locations.

AEROBICS

Ages: Teen - Adult
Days: Tuesdays and Thursdays
Time: 5:30 p.m. - 6:30 p.m.
Dates: September - May (Classes are ongoing)
Place: Worton Arena
Cost: \$60 per eight week session or \$6 per class

Ask about County & State Employee and Student discounts!

Classes include step, aerobic (cardiovascular) conditioning, light weight training, toning and stretching. Contact Myra Butler at 410-778-1986 or mbutler@kentgov.org for further information.



SUMMER AEROBICS (TENTATIVE)

Ages: Teen - Adult
Days: Monday and Wednesday
Time: 5:15 p.m. - 6:30 p.m.
Dates: June - August (10 week session)
Place: Washington College
(Lifetime Fitness Center)
Cost: \$80 full session or \$6 per class

*Ask about County & State Employee and Student discounts!
Ask about Washington College affiliation discounts!*

Classes include step, aerobic (cardiovascular) conditioning, light weight training, toning and stretching. Contact Myra Butler at 410-778-1986 or mbutler@kentgov.org for further information.

INCLEMENT WEATHER CANCELLATIONS

In general, if Kent County Public Schools (KCPS) are closed, closes early, or cancels evening programs, all KCPS programs at Worton Arena and at public school sites are cancelled. If KCPS are one hour or 90 minutes late, morning programs will be open. If KCPS are two hours late, morning programs will be closed. These general policies do not necessarily apply to private programs such as AM Zumba. Please be sure to call the weather cancellation hotline (410-810-3755) or visit the Parks and Recreation home page bulletin board at www.KentParksAndRec.org for announcements when the weather is questionable and for announcements related to programs which are privately offered at a Parks and Recreation facility.

YOUTH SPORTS

Kent County Parks and Recreation provides facilities for local youth sports. Each organization is independently governed. Questions or concerns should first be directed to the league representative or contact listed below.



KENT YOUTH LACROSSE

www.kentyouthlacrosse.com

Age Divisions: 7 - 8, 9 - 10, 11 - 12, 13 - 14
 Dates: March - May
 Days: Various
 Cost: \$75 per player (By February 15th)

Registration for youth lacrosse begins mid January each year. The cost (subject to change) includes U.S. Lacrosse membership. Boys equipment rental an additional \$30. Sibling discount \$10 per sibling. Contact league president, Walt Steffens at 410-778-9557 for further information.

KENT COUNTY BABE RUTH SOFTBALL

Age Divisions: 7 - 10 , 11 - 13, 14 - 18
 Dates: April - June
 Days: Various
 Cost: \$50 per player (By March 1st)



Registration for youth softball begins mid January each year. Player must be age listed as of April 1st. Cost subject to change. Contact Penny Usilton at 410-639-7882 for further information.

KENT COUNTY BABE RUTH BASEBALL



Age Divisions: T-Ball: 4 - 6 / Rookie: 7 - 8
 Minor: 9 -10 / Major: 11 - 12
 Prep: 13 - 15 / 16 - 18 Boys
 Dates: April - June
 Days: Various
 Cost: \$45 per player (By February 14th)

Registration for youth baseball begins mid January each year. Player must be age listed as of April 1st. Cost subject to change. Contact league president Mark Dixon at 410-348-5171 or mdixon@kentgov.org for further information.

KENT COUNTY SHORE STICKS FIELD HOCKEY

Ages: 3rd - 5th Grade (Junior)
 6th - 8th Grade (Senior)
 Dates: August - October
 Days: Various
 Cost: TBD



Registration for youth field hockey begins in June each year. Players need stick, mouth guard, and shin guards. Contact Jeanne Yeager at 410-778-0554 or jyeager@mscfv.org for further information.



POP WARNER FOOTBALL & CHEERLEADING

www.kcpopwarner.com

Ages: 5 - 15 (Divisions Below)
 Dates: August - November
 Days: Weekday evening practices
 Saturday games
 Cost: TBD

Registration for youth football and cheerleading begins in May each year. Contact league president Deanna Walls at 410-708-5492 or bdhwalls@aol.com for further information.

<u>DIVISION</u>	<u>AGE GROUP</u>	<u>WEIGHT</u>
TINY-MITE (older/lighter)	5-6-7 N/A	35-75 lbs N/A
MITEY-MITE (older/lighter)	7-8-9 N/A	45-90 lbs N/A
JUNIOR PEEWEE (older/lighter)	8-9-10 11*	60-105 lbs 60-85 lbs
PEEWEE (older/lighter)	9-10-11 12*	75-120 lbs 75-100 lbs
JUNIOR MIDGET (older/lighter)	10-11-12 13*	85-135 lbs 85-115 lbs
MIDGET (older/lighter)	11-12-13-14 15*	105-160 lbs 105-140 lbs

**Older player may play in a younger division if lighter weight requirement is met.*



KENT YOUTH SOCCER

Age Divisions: 6 - 7 (U8-Co-Ed), 8 - 9 (U10)
 10 - 11 (U12), 12 - 13 (U14)
 Dates: August - October
 Days: Various
 Cost: \$45 per player (By June 30th)

Registration for youth soccer begins in May each year. Cost subject to change. Contact Bob Willis at 410-348-2368 or willisr@dmv.com for further information.

YOUTH SPORTS

GOOD SPORTS AWARD

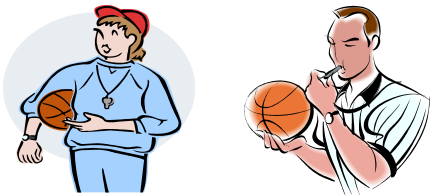
Kent County Park & Recreation is a member of The Mid-Atlantic Recreation & Parks Sports Alliance (MARPSA). Each year MARPSA joins with the Maryland General Assembly to recognize one coach and one athlete from each participating region for "not only good sporting behavior, but also actions made on and off the field that put athletes first, assuring a positive sporting environment". If you would like to nominate a deserving coach and/or athlete. Contact Will Hughes at 410-778-1957 or whughes@kentgov.org.



WANTED!!!

YOUTH BASKETBALL COACHES

Any individuals interested in volunteer coaching a youth basketball team should contact Will Hughes at 410-778-1957 or whughes@kentgov.org for further information.



WANTED!!!

YOUTH BASKETBALL OFFICIALS

Any individual with experience in officiating basketball games who is interested in working with our youth league should contact Will Hughes at 410-778-1957 or whughes@kentgov.org for further information.

INCLEMENT WEATHER CANCELLATIONS

In general, if Kent County Public Schools (KCPS) are closed, closes early, or cancels evening programs, all KCPR programs at Wornton Arena and at public school sites are cancelled. If KCPS are one hour or 90 minutes late, morning programs will be open. If KCPS are two hours late, morning programs will be closed. These general policies do not necessarily apply to private programs. Please be sure to call the weather cancellation hotline (410-810-3755) or the Parks and Recreation home page bulletin board at www.KentParksAndRec.org for announcements when the weather is questionable and for announcements related to programs which are privately offered at a Parks and Recreation facility.

BOYS AND GIRLS YOUTH BASKETBALL

Ages: 9 – 13
Dates: October – March
Days: Weekday evening practices
Friday evening games
Cost: \$40 per player

Registration: August 31st - October 30th

Teams will be formed throughout the County for this basketball league geared towards skill development and fun. Youth ages 9 - 11 will be introduced to the fundamentals of basketball. Youth ages 12 - 13 will begin to learn more advanced techniques and game strategies of basketball. Zone defenses, presses and various offenses will be introduced. This is a beneficial instructional league that will prepare youth for high school level basketball. **The focus of all Parks and Recreation youth leagues is fun, not competition.** Contact Will Hughes at 410-778-1957 or whughes@kentgov.org for further information.

HOOP JAM

Ages: 6 – 8
Dates: November – January
Days: Tuesday and Thursday
Cost: \$40 per player



Registration: August 31st - October 30th

This exciting developmental program for boys and girls ages 6, 7 & 8 will work on skill development in a clinic atmosphere with a focus on learning the fundamentals of basketball and having fun. Special guests and field trips with a focus on the development of each participant, this program lays a solid foundation for life on and off the court. Contact Will Hughes at 410-778-1957 or whughes@kentgov.org for further information.



KENT YOUTH WRESTLING

Ages: 1st - 8th Grade
Dates: October - March
Days: Tuesday and Thursday
Cost: \$40 per wrestler

Registration: August 31st - October 30th

This program is designed to teach the fundamentals of the sport of wrestling and have fun at the same time. Led by members of the Upper Chesapeake Wrestling League, this is a great opportunity to learn from the best Kent County has to offer. Contact Will Hughes at 410-778-1957 or whughes@kentgov.org for further information.

YOUTH PROGRAMS

2009 SUMMER CAMP SCHEDULE & FEES

- Ages: 3 ½ -5 (Kiddie Camp)
6 - 10 (Day Camp)
Entering 5th - 6th Grade (Youth in Action)
- Days: Monday - Friday
- Time: 9 a.m. - 5 p.m. (Regular Hours)
8 a.m. - 5:30 p.m. (Extended hours)
- Place: Worton Park
(Day Camp & Youth In Action)
Worton Elementary (Kiddie Camp)
- Dates: Session 1: June 29th – July 2nd (Closed 7/3)
Session 2: July 6th – July 10th
Session 3: July 13th – July 17th
Session 4: July 20th – July 24th
Session 5: July 27th – July 31st
Session 6: August 3rd – August 7th
Session 7: August 10th – August 14th
- Cost: \$60 per week (Regular Hours)
\$70 per week (Extended Hours)
\$70 per week (Youth in Action)
(DAILY FEES NOT AVAILABLE)

Weekly Payment Discount:

Each additional child in same household paying on a weekly basis will receive 25% discount.

OR

*Entire Summer Fee Discount:

\$360 for entire summer per child
(Regular hours)

\$420 for entire summer per child
(Extended hours and Youth in Action)

*Fee must be **paid in full** by 4:30 p.m. the Friday before camp begins to receive entire summer fee discount. Sibling discount and entire summer discount cannot be combined.

KIDDIE CAMP

This activity-oriented summer program is designed specifically for children ages 3 ½ - 5 allowing for growth, learning and fun in a structured setting. Individual and group play, as well as creativity are emphasized. Indoor and outdoor games, arts and crafts, story telling, movies, songs, plus special events are included. Snacks and juice are provided daily. **Children must bring a non-refrigerated lunch each day. CHILDREN MUST BE TOILET TRAINED!** This program limited to 24 children. Half day afternoon option is available for Kiddie Camp only. **Registration begins April 1st.** Contact Myra Butler 410-778-1986 or mbutler@kentgov.org for further information.



DAY CAMP

Day camp introduces children ages 6 - 10 to a healthy and fit life style, socialization skills, nature appreciation, cultural diversity, and challenging individual and group activities. There will be weekly field trips (additional cost), swimming, arts and crafts, movies, special events and much more. Fees are based on full day, weekly attendance. **Children must bring a non-refrigerated lunch and snacks each day. Registration begins April 1st.** Contact Myra Butler at 410-778-1986 or mbutler@kentgov.org for further information.



YOUTH IN ACTION CAMP

Recognizing the need for leadership, guidance, and opportunities for youth entering grades five and six, Youth In Action was fostered through its notably successful predecessor Leaders Club. Youth will participate in a highly structured program that promotes strong values and character building, fit and healthy life style choices, nature appreciation, as well as, fun and educational field trips and events. This program is limited to 28 children. **Children must bring a non-refrigerated lunch and snacks each day. Registration begins April 1st.** Contact Myra Butler at 410-778-1986 or mbutler@kentgov.org for further information.

LEADERS CLUB

- Ages: Entering 7th, 8th and 9th Grade
Dates: June 29th – August 14th
Days: Monday – Thursday
Time: 8:30 a.m. – 5 p.m.
Cost: \$200 yearly membership

****School Year Program Next Page****

Leaders Club is a youth leadership initiative focusing on positive peer influences to channel negative behavior into more positive beneficial pursuits. This is done through a variety of educational, recreational and service learning type activities. The program helps to develop and enhance self-esteem, decision making and problem solving skills. During the summer, youth will participate in service learning activities such as Adopt-a-Road clean up, volunteering at local nursing centers, and participating in educational and prevention sessions. **First year registration begins April 1st.** Contact Abby Joiner at 410-778-2083 or ajoiner@kentgov.org for further information.



YOUTH PROGRAMS

PLAYGROUND PROGRAM

Ages: 5 - 11
Dates: June 29th – August 7th (Closed July 4th)
Days: Monday – Friday
Time: 9 a.m. – 5 p.m.
Place: Garnett Elementary School and
Rock Hall Civic Center
Cost: \$50 per child

Registration begins April 1st

This six week drop-in program (weather permitting) provides arts and crafts, games and activities to keep your child active for the summer. Contact Abby Joiner at 410-778-2083 or ajoiner@kentgov.org for further information.

BOYS & GIRLS TUMBLING & GYMNASTICS

Ages: 2 – 11
Dates: September 26th - November 14th (Fall)
January 9th - February 27th (Winter 2010)
Spring 2010 Dates TBD
Days: Saturday
Place: Worton Arena
Time: •Tiny Tumblers, 9:25 a.m. – 10 a.m.
•Munchkins, 10:15 a.m. – 11 a.m.
•Primary/Beg. , 11:15 a.m. – 12:15 p.m.
Cost: \$50 per eight week session
or \$120 all sessions (Fall through Spring)

Tiny Tumblers (ages 2-3) introduces tumblers to movement and space and requires parent participation. **Munchkins in Motions (Ages 4-5)** is an introductory program that emphasizes tumbling, rolls, balance, strength and coordination. **Primary and Beginner (ages 6-11)** introduces floor routines, balance beam, vaulting and uneven bars. Weather cancellations announced by 8 am if questionable. Contact Myra Butler at 410-778-1986 or mbutler@kentgov.org for further information.

LEADERS CLUB SCHOOL YEAR

Ages: 7th - 8th Grade
Dates: September - May
(Once a week at each middle school)
Days: Monday – Thursday
Time: School Dismissal – 5 p.m.
Cost: Included in summer program fee

Leaders enrolled in the summer program are invited to join activities through the school year during after school hours, one day a week at each middle school. Leaders Club school year will focus on building leadership values through community service projects as well as participating in a mediation program to learn positive conflict resolution skills. A portion of our school year program will also focus on substance use prevention education. In addition to weekly meetings Leaders will have an opportunity to participate in social activities once a month on weekends or when school is closed. Contact Abby Joiner at 410-778-2083 or ajoiner@kentgov.org for further information.

ELEMENTARY AFTER SCHOOL PROGRAM

Ages: Kindergarten – 4th Grade
Dates: First day of school to last full day of school
Days: Monday – Friday
(When school is in session)
Time: School dismissal to 6 p.m.
*****Transportation not provided*****
Place: Garnett, Millington, Rock Hall
& Worton Elementary Schools
Cost: \$60 per child per month

Registration begins July 1st each year

Fun, safe, structured activities after school designed for school age children that include arts and crafts, educational themes, homework time, sports and recreational activities. Conveniently located at Kent County Public Schools' four elementary schools, the program is open Monday through Friday when school is in session. In the event that school is closed or closes early, the program will be closed. Each site is limited to 30 children. Contact Myra Butler at 410-778-1986 or mbutler@kentgov.org for further information.

PINT SIZED PICASSO

Ages: 2 - 4
Dates: March 12th - April 16th
October 8th - November 12th (Tentative)
January 21st - February 25th (Tentative)
Days: Thursday
Time: 9:30 a.m. – 10:20 a.m.
Place: Worton Arena
Cost: \$70 per child per six week session

This six-week toddler art program will introduce very young children to various art media and techniques and allow for an enjoyable creative experience with materials. The focus is on the process, not the product. Basic art concepts such as color, shape and line will be addressed through printmaking, painting, collage, sewing, sculpture and drawing. Parent involvement is required. Washable paints will be used, but it is suggested to dress for a mess or bring a smock. Class size is limited to ten students. Contact Myra Butler at 410-778-1986 or mbutler@kentgov.org for further information.

TOTS OF FUN

Ages: Preschool
Dates: November 17th - April 13th
Days: Tuesday
Time: 10 a.m. – 11:30 a.m.
Place: Worton Arena
Cost: Free



Join other parents and children for drop in play time for pre-schoolers. Bring your tricycles and scooters. The perfect opportunity to promote socialization, sharing and fun! Contact Myra Butler at 410-778-1986 or mbutler@kentgov.org for further information.

PROGRAMS FOR ALL AGES

INTRODUCTION TO BALLET, JAZZ & TAP

Ages/Times:

- Baby Ballet (ages 5-8), 6:15 p.m. - 7 p.m.
- Kinder Ballet (ages 9 - 12), 7 p.m. - 8 p.m.

Dates: January 5th - March 13th
September 28th - December 4th

Days: Monday

Place: Worton Arena

Cost/Times: \$50 per ten week session
(plus recital costume)

Uniform: Black Leotard, Pink Tights,
Pink or Black Ballet Shoes, Tap Shoes



Students will be introduced to the world of ballet through barre warm-up, stretches, center practice and across the floor combinations. Students will be introduced to the world of jazz while learning a variety of steps such as shuffle, dig, heel drops, toe taps, hip hop, musical theatre, and other dance genres. The ten week classes will culminate with a showcase of skills for parents, friends, and other loved ones. A minimum of eight participants is required for each session. Contact Myra Butler at 410-778-1986 or mbutler@kentgov.org for further information.

YOUTH HIP HOP

Ages: 9 - 12

Dates: January 7th - March 13th
September 30th - December 4th

Days: Wednesday

Times: 6:15 p.m. - 7 p.m.

Place: Worton Arena

Cost: \$50 per ten week session
(plus recital costume)

Come learn all of the hip hop moves that R&B and Hip Hop singers and rappers dance to. The ten week classes will culminate with a showcase of skills for parents, friends, and other loved ones. A minimum of eight participants is required for each session. Classes are instructed and choreographed by Tasha Swinson. Contact Myra Butler at 410-778-1986 or mbutler@kentgov.org for further information.

KENT COUNTY YOUTH 2 YOUTH POST PROM STEERING COMMITTEE

Ages: Grade 9 - Adult

Dates: September - April

Days: Tuesdays

Times: 6 p.m. - 8 p.m.

Place: The Alley Teen Center, Chestertown

Youth 2 Youth is an exciting youth driven substance abuse prevention club for high school students, staff, parents, and members of various community organizations dedicated to creating fun, safe, drug-and-alcohol-free events and alternative activities. As a student member of this committee you will have the opportunity to be a voice in the planning and fund raising for the KCHS Post Prom Party as well as other community events. Contact Abby Joiner at 410-778-2083 or ajoiner@kentgov.org for further information.

BALLROOM DANCE

Ages: Teen - Adult

Days/Times:

Thursday Beginner, 7:30 p.m. - 9 p.m.

Sunday Advanced, 3 p.m. - 5 p.m.

Dates: February 5th - March 26th (Beginner)
September 10th - October 29th (Beginner)
September 13th - November 1st (Advanced)

Place: Worton Arena

Cost: \$50 per couple per eight week session

Let's Dance! Our instructors continue to pack the house for dance lessons! American Style ballroom dancing that is painless exercise and fun. Ballroom dancing has grown in popularity because of current television dance programs. Not just for the more mature adult, the class promises to interest even the youngest adult students. Dances include the Fox Trot, Eastern Swing, Waltz, Rumba, Cha Cha, Tango, and maybe even a Polka. Bring a group or just a pair. Contact Myra Butler at 410-778-1986 or mbutler@kentgov.org for further information.

ROLLERSKATING

Ages: All Ages

Dates: December - March

Days: Sunday

Time: 1 p.m. - 4 p.m.

Place: Worton Arena

Cost: \$1 per skater (Must provide own skates)



Lace up those skates or roller blades for a fun afternoon of skating at Worton Arena. All participants must provide their own skates. Children ages eight and under must be supervised by an adult. Contact Myra Butler at 410-778-1986 or mbutler@kentgov.org for further information.

SUNDAY SKATING PARTIES

To arrange a birthday party (15 or less children) during the public skating session (Sundays, December - March), reservations must be made at least one week prior to the date requested. **Walk-in parties will not be permitted.** Contact Stacy Denny at 410-778-1948 or sdenny@kentgov.org for guidelines or to reserve your party date.

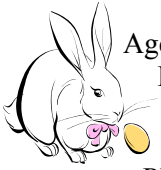
INCLEMENT WEATHER CANCELLATIONS

In general, if Kent County Public Schools (KCPS) are closed, closes early, or cancels evening programs, all KCPR programs at Worton Arena and at public school sites are cancelled. If KCPS are one hour or 90 minutes late, morning programs will be open. If KCPS are two hours late, morning programs will be closed. These general policies do not necessarily apply to private programs. Please be sure to call the weather cancellation hotline (410-810-3755) or the Parks and Recreation home page bulletin board at www.KentParksAndRec.org for announcements when the weather is questionable and for announcements related to programs which are privately offered at a Parks and Recreation facility.

SPECIAL EVENTS

AS SPACE IS LIMITED FOR MOST SPECIAL EVENTS, PRE-REGISTRATION IS REQUIRED BY 4:30 P.M. ON REGISTRATION DEADLINE. PARENTAL SUPERVISION IS REQUIRED DURING ALL SPECIAL EVENTS. WEATHER CANCELLATIONS WILL BE MADE ONE HOUR PRIOR TO EVENTS.

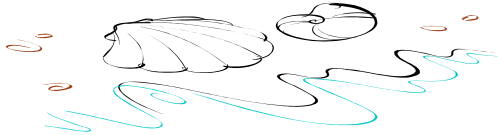
SPRING FESTIVAL



Ages: 12 and under
Date: Saturday, March 28th
Rain Date, Sunday, March 29th
Time: 1 p.m. – 4 p.m.
Place: Worton Park
Cost: \$7 (\$9 if registered late)

Registration: February 23rd – March 20th

Enjoy an afternoon of Easter egg hunts, egg decorating, pony rides, crafts and more! Special guest: THE EASTER BUNNY! All games and pictures with the Easter Bunny are included in the total cost. Contact Abby Joiner at 410-778-2083 or ajoiner@kentgov.org for further information.



BETTERTON BEACH CLEAN-UP

Ages: All ages welcome!
Date: Saturday, April 18th
Rain Date, Sunday, April 19th
Time: 9 a.m. – 12 p.m.
Place: Betterton Beach

Registration: March 23rd – April 15th

Help clean Betterton Beach in preparation for the upcoming summer season. There will be food and beverages provided for participants following the clean-up. Free t-shirt to volunteers registered by April 11th. Contact Abby Joiner at 410-778-2083 or ajoiner@kentgov.org for further information.

HOOKED ON FISHING, YOUTH FISHING DERBY

Ages: 15 and under
Date: Saturday, June 7th (Rain or Shine)
Time: 9 a.m. – 12:30 p.m.
Place: Turner's Creek Park
Cost: \$7 (\$9 if registered late)

Registration: May 4th – May 29th

Join together with area businesses, organizations, and volunteers to teach children how to fish-not just for the sport of it, but for the family values it can instill. This special event includes prizes for casting, biggest fish of the day, biggest fish in a species and biggest fish in each age division. Free lunch and goodie bag to all registered children. **Rod and reel give-away to first 75 to pre-register and arrive by 10 a.m. the day of event.** Bait will be provided. Contact Abby Joiner at 410-778-2083 or ajoiner@kentgov.org for further information.

SCOTT D. LIVIE MEMORIAL BLUE CRAB MASTERS & GRAND MASTERS LACROSSE TOURNAMENTS

Dates: September 19th and 20th
Days: Friday, Saturday and Sunday
Place: Worton Park
Cost: Team Entry Fee TBD (Free to spectators)

Master and Grand Master teams will compete separately in a three day lacrosse tournament. The event will conclude with an all team buffet dinner. Contact Jeff Troester at 410-778-1948 or jtroester@kentgov.org for further information.

FALL FESTIVAL CALL FOR VENDORS!
If you are a craft vendor, demonstrator, children's entertainer, musician or organization who would like to participate in our Family Fall Festival on October 10th contact Abby Joiner at 410-778-2083.

8TH ANNUAL FAMILY FALL FESTIVAL

Ages: All ages welcome!
Date: Saturday, October 10th
Rain Date, Sunday, October 11th
Time: 11 a.m. – 4 p.m.
Place: Turner's Creek Park
Cost: \$5 per child, 15 and under



Come join us as we welcome the Fall season with fun and games for the entire family. Kent Museum, Inc. will be open for tours and activities, see dog demonstrations, take a guided canoe tour, visit MD DNR's Scales to Tales, crafts, displays, live music, kids entertainment, pony rides, face painting, contests, food and craft vendors and so much more. Don't miss out on this event for the entire family! Contact Abby Joiner at 410-778-2083 or ajoiner@kentgov.org for further information. No preregistration required.

SANTA'S WORKSHOP

Ages: 12 and under
Date: Saturday, December 5th
Rain Date, Sun. Dec. 6th
Time: 1 p.m. – 4 p.m.
Place: Worton Arena
Cost: \$7 (\$9 if registered late)



Registration: November 2nd – November 27th

Children and families will love to participate in this seasonal gathering featuring Santa! Come enjoy crafts, refreshment and don't forget your list! All crafts, refreshments, and pictures with Santa are included in the cost. Contact Abby Joiner at 410-778-2083 or ajoiner@kentgov.org for further information.



CURRENTLY SCHEDULED TRIPS

RINGLING BROS. AND BARNUM & BAILEY CIRCUS FIRST MARINER ARENA, BALTIMORE

Saturday, April 4th
Show Time - 11:30 a.m.
\$32 per person
Depart 8:30 a.m., Return 3:30 p.m.

NEW YORK-DAY ON YOUR OWN!

Saturday, May 9th
\$45 per person
Depart 6 a.m., Return 10:30 p.m.

REGULAR TRIPS BY SEASON



FEBRUARY AND
NOVEMBER



RINGLING BROTHERS AND
BARNUM & BAILEY CIRCUS
MARCH

NYC - A DAY ON YOUR OWN
MAY AND OCTOBER



BUS TRIP POLICIES

- ◆ Parental Supervision is required on all trips for children under 18 years of age.
- ◆ Reservations are accepted on a first come, first serve basis by telephone or in person. **Full payment guarantees reservation and is due within seven days of making reservation.**
- ◆ **Payment is accepted in the form of cash (exact amount), check or money order only.** Payments may be made in person at the Parks and Recreation office located at 10932 Worton Road, Worton, MD or by mail to KCPR, Abby Joiner, P.O. Box 67, Worton, MD 21678.
- ◆ **Refunds will not be issued** unless we are able to resell your package to another individual (preference is given to those on an official waiting list), or the trip is canceled and cannot be rescheduled. Refunds are subject to a \$5 processing fee and may take up to three weeks to process.
- ◆ All prices include chartered coach line transportation (unless notified otherwise) with restroom on bus. Meals not included in cost of trip unless specified.
- ◆ Departure for all trips will be from the Worton Arena parking area in Worton, MD. **All return times are approximate.**
- ◆ Kent County Parks and Recreation reserves the right to cancel any trip that does not meet the minimum reservation guidelines set forth by this department. Full refund issued if trip is canceled.

Contact Abby Joiner at
410-778-2083 or
ajoiner@kentgov.org for further
information on bus trips or if
you have a trip idea.

CERTIFICATION COURSES

AMERICAN RED CROSS SAFE BABYSITTER TRAINING

Ages: 11 - 15
Dates: March 7th or September 12th
Days: Saturday
Time: 9 a.m. – 4 p.m.
Place: Worton Arena
Cost: \$60 per person
(Includes lunch)



Designed to help young people become safe babysitters, the 6 ½ hour training is interactive and includes five primary areas: Leadership, Safety and Prevention, First Aid, Basic Care, and Professional Skills. Class size is limited to 12 students. A minimum of eight students is required. Please advise of special dietary needs at time of registration. Contact Myra Butler at 410-778-1986 or mbutler@kentgov.org for more information.

HUNTER & FIREARM SAFETY COURSES

For the latest information on Hunter & Firearm Safety courses offered throughout the state of Maryland please contact the Maryland Department of Natural Resources at 410-643-8502 or on the web at <http://dnrweb.dnr.state.md.us/nrp/huntingclass.html>.



MARYLAND SAFE BOATING COURSES

Ages: 12 – Adult (under age 12 must be accompanied by an adult at least 21 years old)
Dates: March 16th, 17th and 18th
November dates TBD
Time: 6 p.m. – 9 p.m.
Place: Worton Elementary School
Cost: \$25 per person

Pre-registration required!

This 8 hour course, instructed by certified Maryland Department of Natural Resources instructors, is designed to teach participants basic boating safety. Certification is awarded upon successful completion of written examination. Please inform us of any reading or writing disability at the time of registration to arrange special testing. This is a state required course for anyone born on or after July 1, 1972 who wishes to operate a boat in Maryland waters. Contact Abby Joiner at 410-778-2083 or ajoiner@kentgov.org for further information.

CANCELLATION & REFUND POLICY

Course cancellations must be made during business hours no less than two business days before class starts to qualify for a refund. A \$5 service fee will be charged and deducted from refund. Refunds may take up to three weeks to process.

PARKS & RECREATION ADVISORY BOARD SCHEDULE OF MEETINGS

Meetings are generally held the third Monday of each month at 7 p.m. at Worton Arena. January and February meetings are held the second Monday of the month due to holidays. Meetings are open to the public.



EMPLOYMENT AND VOLUNTEER OPPORTUNITIES

All applicants recommended for employment must be approved by the Kent County Commissioners and must meet pre-employment requirements including a negative urinalysis screening. For more details regarding job descriptions and pre-employment requirements, please call 410-778-1948.

Summer Employment Opportunities Applications accepted March 1st

- Bus Driver
- Day Camp Director
- Kiddie Camp Director
- Camp Counselor (Kiddie Camp or Day Camp)
- Jr. Camp Counselor (Kiddie Camp/Day Camp)
- Youth In Action Camp Director
- Youth In Action Camp Counselor
- Leaders Club Assistant Coordinator
- Leaders Club Counselor
- Playground Supervisor
- Playground Leader
- Playground Aide
- Head Lifeguard
- Lifeguard
- Swim Instructor (Millington Pool)
- Park Supervisor
- Maintenance Worker

Substitutes (Needed for all positions on an on call basis)

School Year Employment Opportunities Applications accepted July 1st

- Elementary After School Director
- Elementary After School Aide
- Evening Facility Supervisor
- Leaders Club Counselor
- Special Events Assistant
- Youth Basketball Official
- Volunteer Youth Basketball Coach
- Substitutes (Needed for all positions on an on call basis)
- “Specialty” Instructor and Assistant-
Art, Dance, Fitness, Gymnastics, Other